

GENETIC STUDIES OF F₂ POPULATION FOR FIBER AND YIELD RELATED ATTRIBUTES IN
GOSSYPIMUM HIRSUTUM

FATIMA A¹, SAEED A², *KHALID MN², IMAM MMF³, RAFIQUE MA², SHARIF MS⁴, IQBAL N⁵, TIPU
ALK⁶, AMJAD I²

¹Department of Botany, University of Agriculture Faisalabad, Pakistan

²Department of Plant Breeding and Genetics, University of Agriculture Faisalabad, Pakistan

³Department of Plant Breeding and Genetics, Ghazi University, Dera Ghazi Khan, Pakistan

⁴Department of Plant Breeding and Genetics, Islamia University of Bahawalpur, Pakistan

⁵Soil Salinity Research Institute Pindi Bhattian, Pakistan

⁶Cotton Research Institute Multan, Pakistan

Correspondence author email address: noumankhalidpbg@gmail.com

(Received, 11th May 2022, Revised 2nd November 2022, Published 6th November 2022)

Abstract: Cotton (*Gossypium hirsutum* L.) is grown as a commercial crop throughout the world and it maintains the national economy of Pakistan. Genetic variation is ultimate necessity of plant breeder for the utilization of high yielding varieties to minimize the gap between production and demand. An experiment was conducted for the estimation of correlation, path coefficient analysis, principal component analysis and cluster analysis for yield components in cotton (*Gossypium hirsutum* L.). Four genotypes and twelve F₂ hybrids planted in field by using the randomized complete block design with two replications. Collected Data was subjected to analysis of variance (ANOVA) to observed difference for all traits which showed significant differences among studied traits. Correlation studies revealed that boll weight and number of bolls per plant showed strong and positive correlation with seed cotton yield. Path coefficient analysis revealed that boll weight and number of bolls per plant had positive direct effects on seed cotton yield. Based on biplot analysis it was identified that FH-342 × FH-458 and AGC-501 × VH-363 performed best for the boll weight, number of bolls per plant and seed cotton yield attributes. Dendrogram revealed genotypes under study were grouped in three clusters. Hence, selection for these characters will help in selecting genotypes with high yield and traits which contribute directly in cotton yield enhancement.

Keywords: cotton, PCA, correlation, path coefficient, cluster

Introduction

Cotton is the one of most important crops because it is largely cultivated on commercial area and popularly known as “white gold” (Kaleri *et al.*, 2021; Zafar *et al.* 2022; Abbas *et al.*, 2015). More than 50 species of cotton have been found as cultivated species. Cotton is a large source of textile fiber. Climate change has a significant effect on cotton production. Numerous high-yielding cultivars lack the superior fibre quality required by the textile industry (Ali *et al.*, 2019). In the past decade, yield and quality have declined due to the current genotype's lack of genetic diversity (Nawaz *et al.*, 2019). Utilizing and enhancing the genetic variety of current germplasm is essential for producing the necessary genotypes (Shuli *et al.*, 2018). Breeding programmes should be used to expand the genetic diversity of cotton cultivars (Hafeez *et al.*, 2021; Yehia and El-Hashash, 2022; Puspito *et al.*, 2015). Utilizing genetic variety will facilitate the development of germplasm with desirable

characteristics. Knowledge of the type and degree of genetic variety, genetic development, and heredity is essential for the selection of superior genotypes and the evaluation of the relationship between yield components and fibre quality (Latif *et al.*, 2015; Memon *et al.*, 2017).

Study of correlation plays a vital role for the development of cotton. It also shows the relationship between various characters and the yield contributing traits is the main focus for selection (Monicashree and Balu, 2018). Genetic development in seed cotton and lint yield can be improved with the help of correlation. To study the direct and indirect effect, path analysis plays the vital role which can't explain through correlation analysis (Balochet *et al.*, 2015). Yield is a very complex attribute. It is the total sum of all those characters which are controlled by polygenes and have a complex type of gene interaction. Hence, it is necessary to know the traits that influence the seed cotton yield, directly or indirectly (Ali *et al.*, 2013; Ali *et al.*, 2014; Ali *et al.*, 2016; Rehman *et al.*, 2020).



Materials and Methods

The present study was conducted to assess the genetic variability among 4 parents and their 12 F₂ segregating populations that were obtained from Cotton Research Group, Department of Plant

Breeding and Genetics, University of Agriculture Faisalabad (Table 1). This experiment is performed under RCBD with two replications. The climatic conditions during the crop period are represented in figure 1 and 2.

Table 1: Experimental material

Code	Parents & F ₂ Populations		
G1	FH-458	G9	AGC-501×VH-363
G2	AGC-501	G10	AGC-501×FH-342
G3	VH-363	G11	VH-363×FH-458
G4	FH-342	G12	VH-363×AGC-501
G5	FH-458×AGC-501	G13	VH-363×FH-342
G6	FH-458×VH-363	G14	FH-342 ×FH-458
G7	FH-458 ×FH-342	G15	FH-342×AGC-501
G8	AGC-501×FH-458	G16	FH-342×VH-363

At maturity data of the following attributes was taken. Plant height (PH), number of monopodial branches (MB), number of sympodial branches (SB), number of seeds per boll (SPB), number of bolls per

plant (BPP), boll weight (BW), lint index (LI), seed index (SI), ginning out turn percentage (GOT), fiber uniformity (FU), fiber length (FL), fiber strength (FS), fiber fineness (FF), seed cotton yield (SCY)

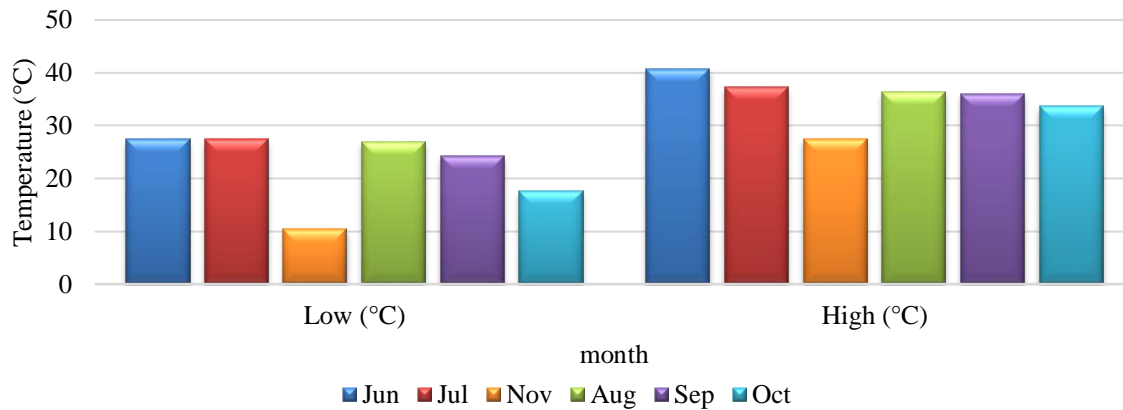


Figure 1: minimum and maximum temperature during crop period

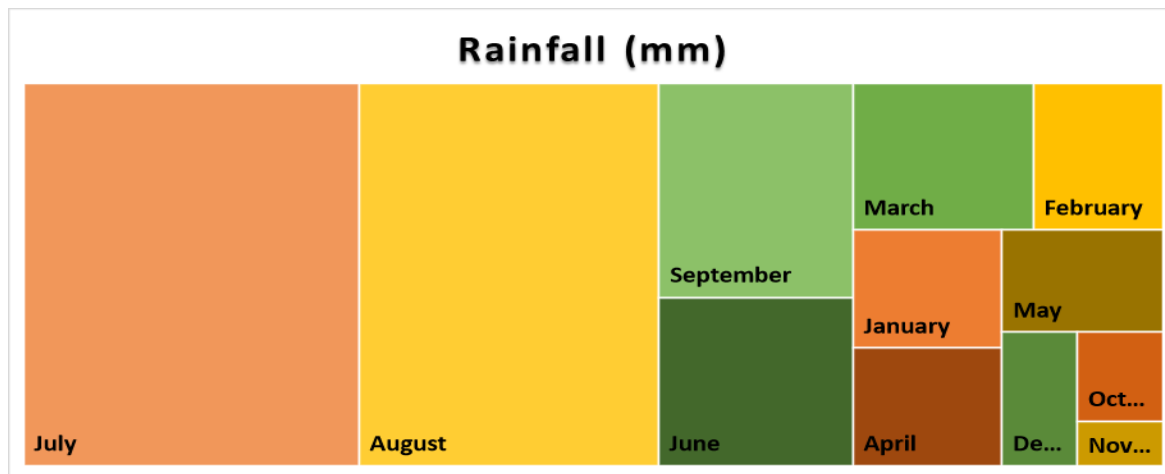


Figure 2: Average rainfall during crop period

Result and Discussion

Genetic diversity is of great importance as it offers a framework for utilizing genes to strengthen the desired traits (Begna, 2021; Govindarajet al., 2015). It helps in assessment of genotypes for devising breeding strategies, selection of diverse genotypes and prediction of genetic gain of the genotypes under study (Bhandari et al., 2017; Mukhopadhyay and Bhattacharjee, 2016). Results of ANOVA manifested that all the genotypes were significantly different from each other as presented in Table 2. Percentage contribution of all the traits under study is presented in figure 3. A heat map is presenting the mean performance of all the genotypes under study for different attributes in figure 4. The correlation analysis (fig 5) revealed that BW and BPP were strongly positively correlated with SCY while SBP and FS strongly negatively correlated. LI and SI were strongly positively correlated with each other while FF is negatively correlated. Rehman et al. (2020) also noticed that SCY had a significant positive correlation with PH, BPP, SBP, and FS. The correlation study performed by Abdullah et al. (2016) revealed that PH, BPP, BW, FL, FS and FF had positive association with SCY. Rathinavelet al. (2017) also observed that SCY was significant and positively correlated with BPP followed by BW, PH, SI and FL. The results of current study are also in accordance with Memon et al. (2017) which observed that PH, BPP, BW and SI showed positive and significant associations with SCY. Kaleri et al. (2021) observed that SBP and BPP had a significant and positive association with SCY which are accordance with this study. Baloch et al. (2015) observed in correlation studies that SBP, BW with SCY. Thus, they suggested that selection for these traits will ultimately enhance the chances to increase SCY. Latif et al. (2015) and Monicashree and Balu (2018) revealed in their results that SCY had positive association with SBP, BPP and PH hence, selection for these characters will help in selecting genotypes with high yield.

Path matrix results in figure 6 depicted that BW and BPP had positive direct effects on SCY while PH, MB and SPB had negative direct effects. MB had positive direct effects on PH. FU positive direct effects on SB while it had negative direct effects on FL. Abdullah et al. (2016) also showed that BPP and

BW had direct positive effect on SCY and PH and GOT had direct negative effect on SCY. Memon et al. (2017) also observed that maximum positive direct effects to SCY were contributed by BPP, BW and SI. Latif et al. (2015) and Monicashree and Balu (2018) also observed the similar results of path analysis. Nawaz et al. (2019) also observed that FF, SI and BPP showed direct positive effects on SCY.

For breeding programs, understanding the genetic relationships between various types of germplasm is especially helpful. For precise plant genetic diversity studies, heterotic group assignment, and cross planning, this data can be used. For this purpose, the two most significant analyses which are commonly used are PCA and cluster analysis (Simasiku et al., 2021). PCA results in figure 7 exhibited that G14 and G9 performed best for the BW, SCY and BPP attributes. Selection of these two genotypes will be led to better SCY with high BW and more BPP. G8, G7 and G4 depicted best for the FU and SB. G3 and G6 performed better for SI and LI. G1, G2, G11 and G12 performed worst so these genotypes will be neglected at the time of selection to boost up better performance for further breeding selection programs. Latif et al. (2015), Rathinavel (2019) and Yehia and El-Hashash (2022) also used PCA in their studies to classify and identify genotypes in diverse conditions. Cluster analysis is a technique for categorizing and clarifying a sample of objects (or subjects) based on a number of distinct groups, while keeping objects within the same group similar (Jarwar et al., 2019). Dendrogram results in figure 8 revealed that under study genotypes mainly have three groups while G11 is separated from all these three groups. G1, G14, G9 and G12 fell in 1st group. G2, G5 and G10 fell in 2nd group. G3, G6, G4, G7, G15, G8, G13 and G16 fell in third group. These groups showed that the genotypes within group performed same behavior while one group performed different from the 2nd group. Rathinavel, (2019) also used cluster analysis and his results showed that 12 distinct clusters. Simasiku et al. (2021) observed 5 clusters of the genotypes under study while Jarwar et al. (2019) observe 3 clusters of 12 genotypes for different traits under study. On the basis of these characteristics, the members of a specific group or cluster can be chosen to maximize yield potential and fibre quality.

Table 2: Analysis of variance for all the attributes

Source	DF	PH	MB	SB	SPB	BPP	BW	LI	SI	GOT	FU	FL	FS	FF	SCY
Rep	1	0.66	0.05	0.53	1.13	1.05	0.10	0.30	0.30	5.80	5.20	7.03	5.45	0.01	129.75
Geno	15	33.12**	0.20**	1.14**	0.74**	6.62**	0.09**	0.18**	0.18**	13.67**	7.60**	5.07**	24.00**	0.73**	223.85**
Error	15	2.76	0.00	0.01	0.10	0.12	0.00	0.01	0.01	0.09	0.18	0.13	0.09	0.00	3.43

[Citation: Fatima, A., Saeed, A., Khalid, M.N., Imam, M.M.F, Rafique, M.A., Sharif, M.S., Iqbal, N., Tipu, A.L.K., Amjad, I. (2022). Genetic studies of F₂ population for fiber and yield related attributes in *Gossypium hirsutum*. *Biol. Clin. Sci. Res. J.*, 2022: 134. doi: <https://doi.org/10.54112/bcsrj.v2022i1.134>]

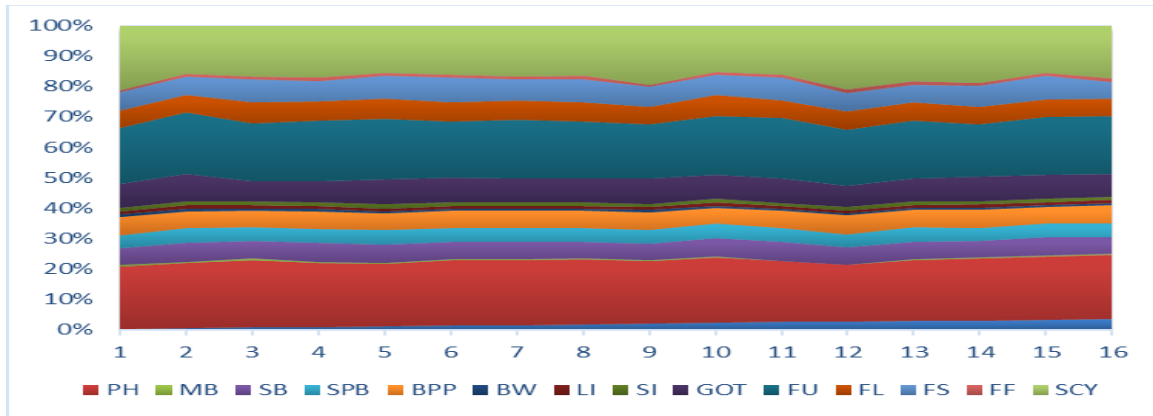


Figure3: Percentage contribution chart of all attributes under study

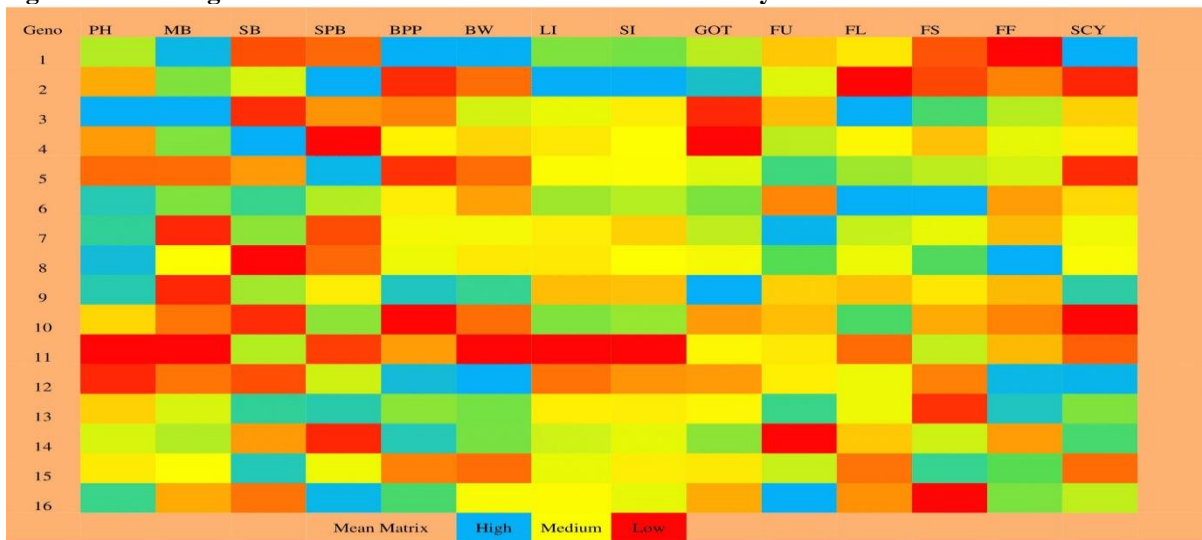


Figure4: Mean performance matrix of all the genotypes for various attributes under study

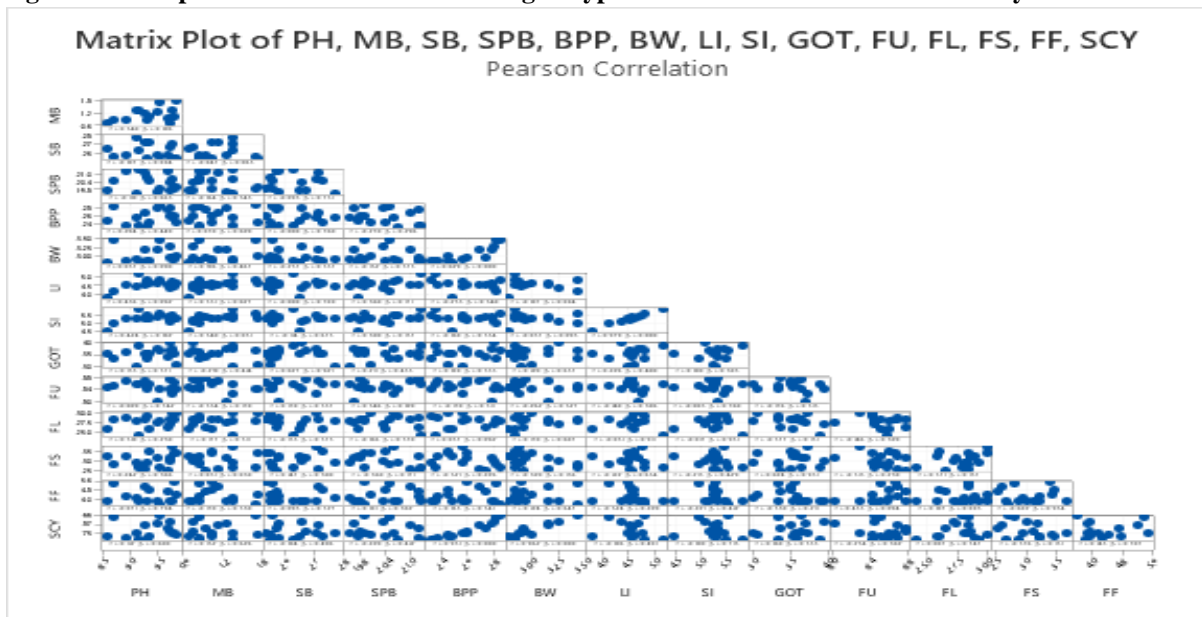


Figure5: Correlation matrix of all attributes with SCY



Figure6: Pathmatrix of all the attributes under study

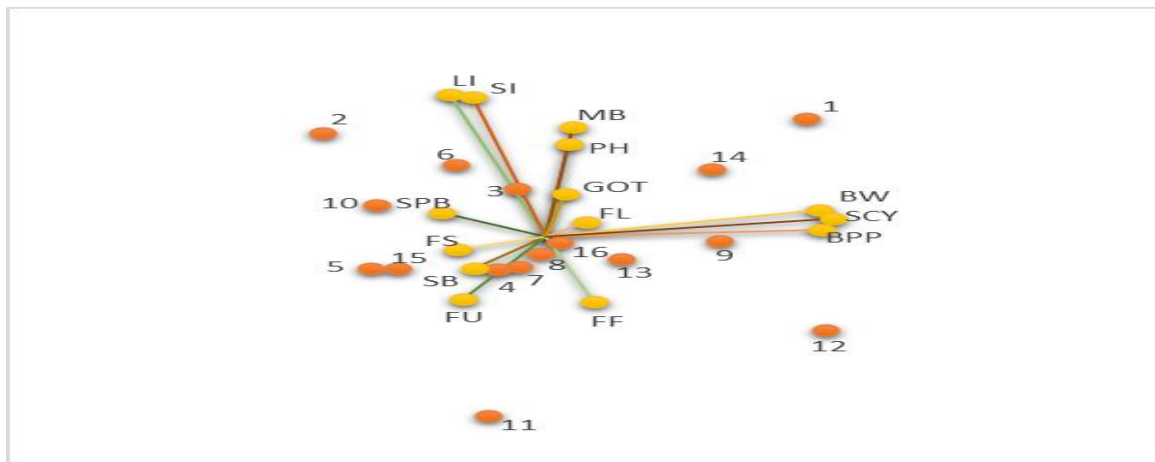


Figure 7: PCA graph of all the genotypes & traits under study

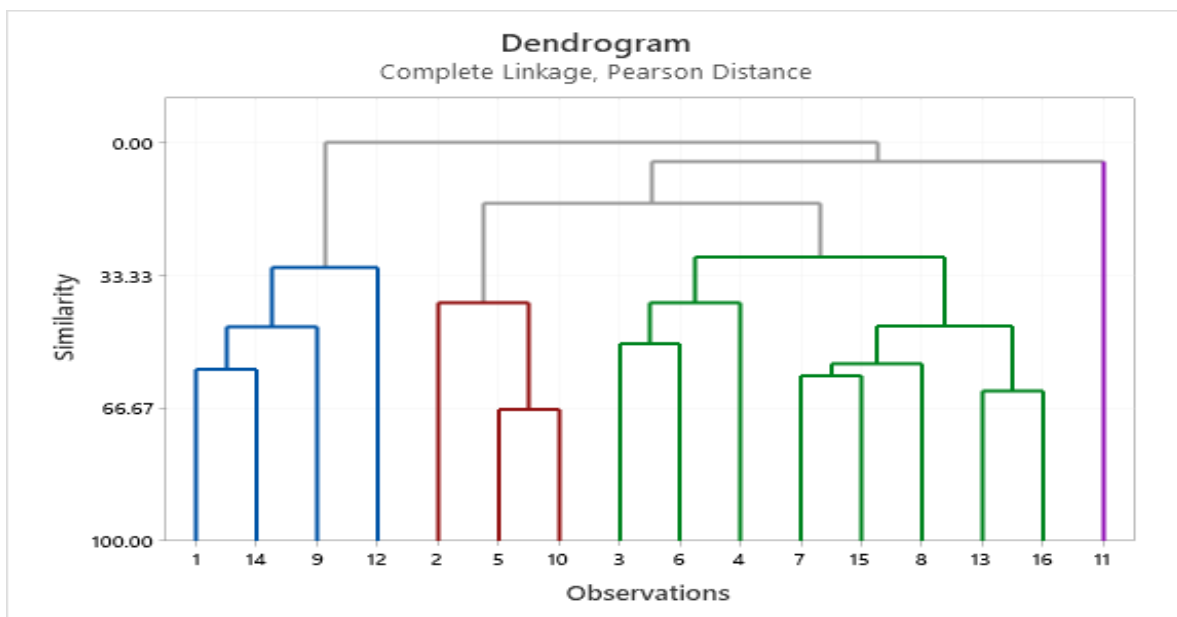


Figure 8: Dendrogram for all genotypes

Conclusion

From the above study it was concluded that BW and BPP showed positive association with SCY. Thus, the characters showing positive correlation with SCY may be further assessed through early generation selection. Based on biplot analysis it was concluded that FH-342 × FH-458 and AGC-501×VH-363 performed best for the BW, SCY and BPP attributes. Overall, characters including SCY, BPP, SBP and BW can be further used as selection criteria to increase the cottonseed yield in cotton.

Conflict of interest

The authors declared absence of conflict of interest.

References

- Abbas, H. G., Mahmood, A., & Ali, Q. (2015). Genetic variability and correlation analysis for various yield traits of cotton (*Gossypium hirsutum* L.). *Journal of Agricultural Research*, **53**(4), 481-491.
- Abdullah, M., M. Numan, M.S. Shafique, A. Shakoor, S. Rehman and M. Ahmad. (2016). Genetic variability and interrelationship of various agronomic traits using correlation and path analysis in cotton (*Gossypium hirsutum* L.). *Academia Journal of Agricultural Research* **4**:315-318.
- Ali, M.A., J. Farooq, A. Batool, A. Zahoor, F. Azeem, A. Mahmood and K. Jabran. (2019). Cotton production in Pakistan. *Cotton Production* 249-276.
- Ali, Q., Ahsan, M., Ali, F., Aslam, M., Khan, N. H., Munzoor, M., ... & Muhammad, S. (2013). Heritability, heterosis and heterobeltiosis studies for morphological traits of maize (*Zea mays* L.) seedlings. *Advancements in Life Sciences*, **1**(1): 52-63.
- Ali, Q., Ahsan, M., Kanwal, N., Ali, F., Ali, A., Ahmed, W., ... & Saleem, M. (2016). Screening for drought tolerance: comparison of maize hybrids under water deficit condition. *Advancements in Life Sciences*, **3**(2), 51-58.
- Ali, Q., Ali, A., Ahsan, M., Nasir, I. A., Abbas, H. G., & Ashraf, M. A. (2014). Line× Tester analysis for morpho-physiological traits of *Zea mays* L seedlings. *Advancements in Life Sciences*, **1**(4), 242-253.
- Baloch, M., A. Baloch, M. Baloch, I. Mallano, A. Baloch, N. Baloch and S. Abro. (2015). Association and heritability analysis for yield and fiber traits in promising genotypes of cotton (*Gossypium hirsutum* L.). *Sindh University Research Journal-SURJ* (Science Series). 47.
- Begna, T. (2021). Role and economic importance of crop genetic diversity in food security. *International Journal of Agricultural Science and Food Technology* **7**:164-169.
- Bhandari, H., A.N. Bhanu, K. Srivastava, M. Singh and H.A. Shreya. (2017). Assessment of genetic diversity in crop plants-an overview. *Advances in Plants Agricultural Research* **7**:279-286.
- Govindaraj, M., M. Vetriventhan and M. Srinivasan. (2015). Importance of genetic diversity assessment in crop plants and its recent advances: an overview of its analytical perspectives. *Genetics Research International* 2015.
- Hafeez, M. N., Khan, M. A., Sarwar, B., Hassan, S., Ali, Q., Husnain, T., & Rashid, B. (2021). Mutant *Gossypium* universal stress protein-2 (GUSP-2) gene confers resistance to various abiotic stresses in *E. coli* BL-21 and CIM-496-*Gossypium hirsutum*. *Scientific Reports*, **11**(1), 1-19.
- Jarwar, A.H., X. Wang, M.S. Iqbal, Z. Sarfraz, L. Wang, Q. Ma and F. Shuli. (2019). Genetic divergence on the basis of principal component, correlation and cluster analysis of yield and quality traits in cotton cultivars. *Pakistan Journal of Botany* **51**:1143-1148.
- Kaleri, A.A., A.W. Baloch, M. Baloch, N.A. Wahocho, T.F. Abro, Q. Jogi, A.A. Soomro, A. Marri and L.A. Bhutto. (2021). Heritability and correlation analysis in Bt and non-Bt cotton (*Gossypium hirsutum* L.) genotypes. *Pure and Applied Biology (PAB)* **5**:906-912.
- Latif, A., M. Bilal, S.B. Hussain and F. Ahmad. (2015). Estimation of genetic divergence, association, direct and indirect effects of yield with other attributes in cotton (*Gossypium hirsutum* L.) using biplot correlation and path coefficient analysis. *Tropical Plant Research* **2**:120-126.
- Memon, S., A.W.B.N. Gandahi, T.A. Yasir, S.M. Sarki, A. Wasaya, I.A. Mallano, M. Ali, A.M. Baloch and A.S. Khethran. (2017). Evaluation of genetic divergence, character associations and path analysis in upland cotton genotypes. *Pure and Applied Biology (PAB)* **6**:1516-1521.
- Monicashree, C. and P.A. Balu. (2018). Association and path analysis studies of yield and fibre quality traits in intraspecific hybrids of upland cotton (*Gossypium hirsutum* L.). *Research Journal of Agricultural Sciences* **9**:1101-6.
- Mukhopadhyay, T. and S. Bhattacharjee. (2016). Genetic Diversity: Importance and Measurements. *Conserving Biological Diversity: A Multiscaled Approach. Research India Publications*, New Delhi. 251-295.
- Nawaz, B., S. Sattar and T.A. Malik. (2019). Genetic analysis of yield components and fiber quality parameters in upland cotton. *International Multidisciplinary Research Journal* **9**:13-19.

- Puspito, A. N., Rao, A. Q., Hafeez, M. N., Iqbal, M. S., Bajwa, K. S., Ali, Q., ... & Husnain, T. (2015). Transformation and evaluation of Cry1Ac+ Cry2A and GTGene in *Gossypium hirsutum* L. *Frontiers in Plant Science*, **6**, 943.
- Rathinavel, K. (2019). Agro-morphological characterization and genetic diversity analysis of cotton germplasm (*Gossypium hirsutum* L.). *International Journal of Current Microbiology and Applied Sciences* **8**:2039-2057.
- Rathinavel, K., H. Kavitha and C. Priyadharshini. (2017). Assessment of genetic variability and correlation analysis of seed and seed cotton yield attributing traits of tetraploid cotton genotypes (*G. hirsutum* L.). *Electronic Journal of Plant Breeding* **8**:1275-1283.
- Rehman, A., N. Mustafa, X. Du and M.T. Azhar. (2020). Heritability and correlation analysis of morphological and yield traits in genetically modified cotton. *Journal of cotton Research* **3**:1-9.
- Shuli, F., A.H. Jarwar, X. Wang, L. Wang and Q. Ma. (2018). Overview of the cotton in Pakistan and its future prospects. *Pakistan Journal of Agricultural Research* **31**:396.
- Simasiku, M., E.J. Wasige and L. Tembo. (2021). Multivariate analysis of cotton genotypes based on agronomic traits. *Journal of Genetics, Genomics & Plant Breeding* **5**:86-94.
- Yehia, W. and E.F. El-Hashash. (2022). Estimates of genetic parameters for cotton yield, its components, and fiber quality traits based on line x tester mating design and principal component analysis. *Egyptian Journal of Agricultural Research* **100**:302-315.
- Zafar, M. M., Mustafa, G., Shoukat, F., Idrees, A., Ali, A., Sharif, F., ... & Li, F. (2022). Heterologous expression of cry3Bb1 and cry3 genes for enhanced resistance against insect pests in cotton. *Scientific Reports*, **12**(1), 1-11.

or exceeds the permitted use, you will need to obtain permission directly from the copyright holder. To view a copy of this licence, visit <http://creativecommons.org/licenses/by/4.0/>.

© The Author(s) 2022



Open Access This article is licensed under a Creative Commons Attribution 4.0 International License, which permits use, sharing, adaptation, distribution and reproduction in any medium or format, as long as you give appropriate credit to the original author(s) and the source, provide a link to the Creative Commons licence, and indicate if changes were made. The images or other third party material in this article are included in the article's Creative Commons licence, unless indicated otherwise in a credit line to the material. If material is not included in the article's Creative Commons licence and your intended use is not permitted by statutory regulation